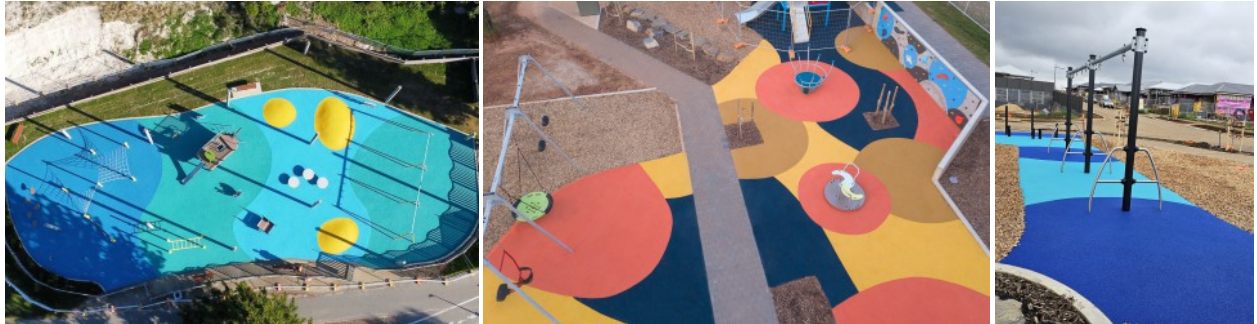




# Playmix Ultra

## *Premium Playground Safety Surfacing*

**LOOKING FOR A SUPERIOR SURFACE THAT TICKS ALL THE BOXES?  
WE HAVE THE SOLUTION!**



**PLAYMIX ULTRA** is a bi-laminate playground safety surfacing system which is poured on site and is suitable for use under and around fixed or portable playground equipment. The resultant surfacing systems are independently certified as capable of absorbing impact within limits defined by AS4422:2016 to a fall height between 500mm - 3000mm.

**PLAYMIX ULTRA** is our premium surfacing solution, using the highest quality aliphatic and UV stable resins, combined with superior Gezolan EPDM granules, achieving a strong and enduring finished surface.



Proudly Australian owned and operated, with warehouses in Adelaide & Brisbane, we are the specialists when it comes to synthetic surfaces in Australia.

Call us today for an obligation free quote.

**SURFACING CONTRACTORS AUSTRALIA**

1300 682 772

[www.surfcon.com.au](http://www.surfcon.com.au)

[admin.sa@surfcon.com.au](mailto:admin.sa@surfcon.com.au)



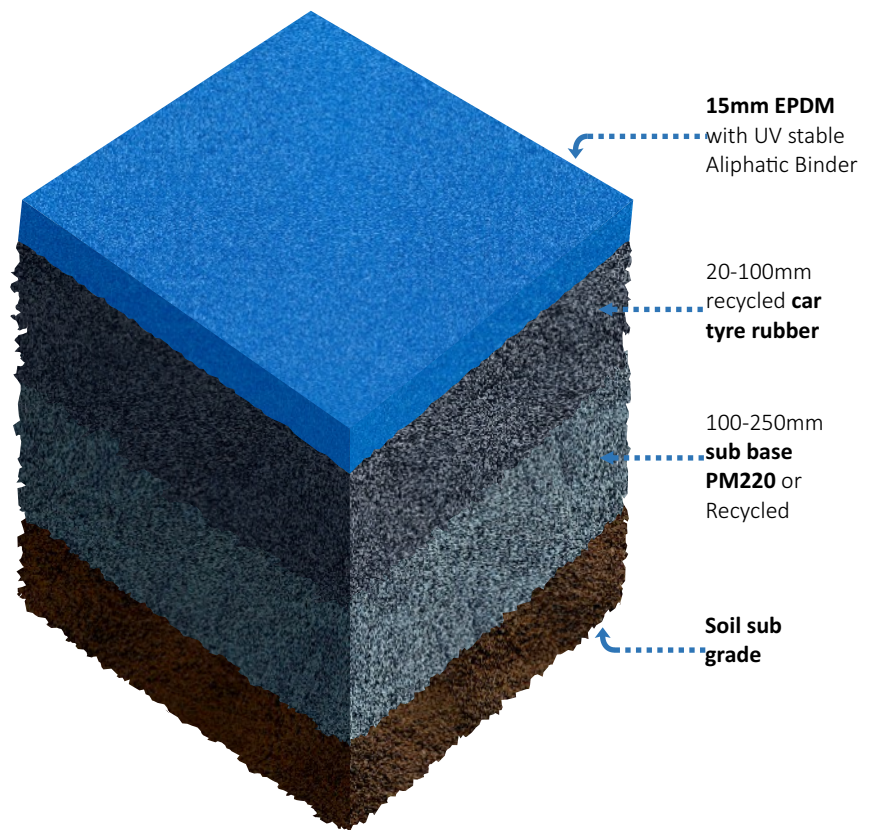


# Playmix Ultra

## *Premium Playground Safety Surfacing*

### KEY BENEFITS

- ✓ The most flexible, durable and colourful Playmix surface available.
- ✓ Permanent, poured in place solution that guarantees year-round safety and compliance.
- ✓ Greater lifespan & longevity than alternatives
- ✓ Anti-slip surfacing with shock absorbing properties.
- ✓ Facilitates inclusivity and access for children of all abilities.
- ✓ Base layer comprised of recycled car tyre rubber, creating a substantial environmental benefit through upcycling.
- ✓ Minimal ongoing maintenance costs.
- ✓ Safe and hygienic alternative to loose fill products such as sand and mulch
- ✓ Fully porous system, when coupled with smart design can create a number of water management benefits
- ✓ Compliant with AS4422, independently tested system.



Proudly Australian owned and operated, with warehouses in Adelaide & Brisbane, we are the specialists when it comes to synthetic surfaces in Australia.

Call us today for an obligation free quote.

### SURFACING CONTRACTORS AUSTRALIA

1300 682 772

[www.surfcon.com.au](http://www.surfcon.com.au)

[admin.sa@surfcon.com.au](mailto:admin.sa@surfcon.com.au)





AUSTRALIAN  
SURFACING  
SUPPLIES PTY LTD

PlayKote



### COLOURS & DESIGNS

PlayKote - Gezoflex EPDM by Gezolan: 23 Colours with exceptional 'A grade quality' EPDM content of >21% (proven through independent testing). Custom blends available, for colour mixer click the link below:

<https://gezolan.com/en/products/mix-it/>

Hopscotch and other games can be applied where required. Custom shapes, detailed designs and 3D construction are available

## PlayKote - Gezolan EPDM Range



White #060  
[RAL # 9010]



Eggshell #056  
[Ivory #1015]



Beige #066  
[Wheat # 1014]



Yellow #069  
[Desert Sand #1002]



Bright Yellow #089  
[Sunraysia #1012]



Bright Green #087  
[Apple #6017]



Green #067  
[Sage #6021]



Dark Green #47  
[Forest #6005]



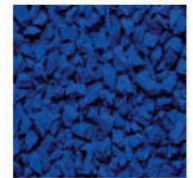
Turquoise Blue #134  
[RAL #5018]



Bright Blue #084  
[Arctic #5012]



Blue #064  
[Ocean #5015]



Dark Blue #054  
[Navy Sea #5010]



Capri Blue #024  
[RAL #5019]



Lilac #044  
[Lavender #4005]



Bright Orange #083  
[Uluru #2008]



Bright Red #082  
[RAL #3017]



Red #062  
[Rust #3016]



Pink #052  
[RAL #4003]



Beige Brown #076  
[Mocha #8024]



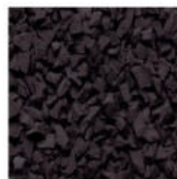
Brown #046  
[Chocolate #8025]



Grey #065  
[Ash #7038]



Middle Grey #055  
[Thunder #7037]



Dark Grey #045  
[RAL #7011]

Please note, all colours are affected to varying degrees by colour shift through aromatic binder coating.

Colours: **White #060, Eggshell #056, Bright Blue #064 & Grey #065** are more likely to experience a temporary yellow hue colour shift when installed with industry standard Aromatic Binders. The colour shift can last approximately 2-5 months, dependent on usage levels and UV exposure levels.

Please ask your consultant about options available if one of these colours is selected and finished colour accuracy is important on your project. We can modify the binder to a Premium Aliphatic binder for additional cost, which will greatly reduce the colour shift effect.

Please check with your consultant about colour availability.

**SURFACING CONTRACTORS AUSTRALIA**

1300 682 772

[www.surfcon.com.au](http://www.surfcon.com.au)

[admin.sa@surfcon.com.au](mailto:admin.sa@surfcon.com.au)

