

The advertisement features a dynamic scene with two athletes. In the foreground, a male athlete in a green and black sports jersey with 'ATP Perkins' branding is running towards the viewer, holding a yellow and blue ball. In the background, another athlete in a white jersey is performing a backflip, with a soccer ball suspended in the air above him. The background is a light, textured surface with green and blue circular patterns. The overall aesthetic is energetic and modern.

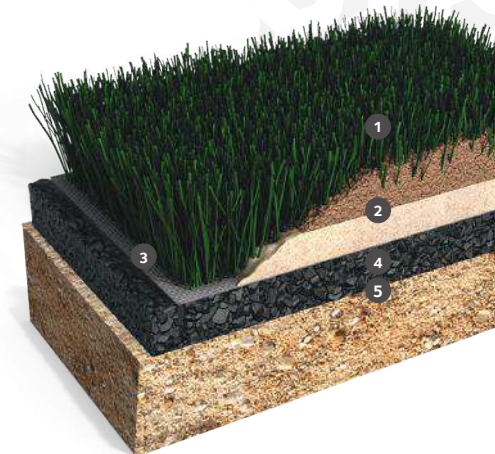
LigaTurf

**PERFORMANCE
ENHANCING
SURFACE
TECHNOLOGY**

RUGBY
SOCCER
AFL



SYSTEM STRUCTURE LAYERS



1 50mm pile height combination of fibrillated tape for durability and monofilament for resilience.



2 Recycled SBR proven performance infill. Kiln dried silica sand stabilising infill.



3 Exclusive Qualiback 'Hybrid Emulsion' secondary backing; for superior seam strength.



4 Proplay modular shock pad layer for sports performance absorption and fall height.



5 Drainage cell system removes all infrastructure under the field.

KEY BENEFITS

LigaTurf HYBRID 50 synthetic turf is designed with both fibrillated and monofilament sports yarns. The combination of monofilament and fibrillated into the one football turf product allows it to offer the advantages of each yarn: fibrillated for durability, monofilament for resilience.

Safety: Performance benefits of the underlying Proplay shock pad incorporate shock absorption with drainage capabilities meeting shock absorption and critical fall height measures for all ages and standards of play.

Functionality: Infill ratio 6-parts sand to 1-part rubber is designed for the sand to stabilise and firm the grass system to take advantage of the performance characteristics of the shock pad. The lower SBR infill content reduces heat build-up and surface radiation.



Usage	Heavy	Moderate	Light
Hours per week	60	40	20
Recommended resurface time (yrs)	7-9	9-10	10+

OUR DIFFERENCE

LigaTurf HYBRID 50 has been developed to meet the performance criteria for football turf combining durability and resilience of the turf fibres complimented by reduced SBR infill content for reduced splash and surface heat.

The modular shock pad layer is instrumental for shock absorption and promotes critical fall height performance, is re-useable in future turf replacements and has vertical drainage capabilities.

LigaTurf HYBRID 50 football turf system design incorporated with the unique and innovative rigid flow cell ensures vertical drainage to a horizontal cell reservoir allowing water to be channeled laterally to a perimeter storm water system. The investment benefit removes all drainage infrastructure under the field that will encounter differential settlement over time. This strong focus on system development provides confidence for our clients that our surfaces are not only built to look good and play well, but are also built to last.



Accelerated testing confirms that LigaTurf HYBRID 50 yarn has set unmatched new standards for resilience and durability.



Fibre shape

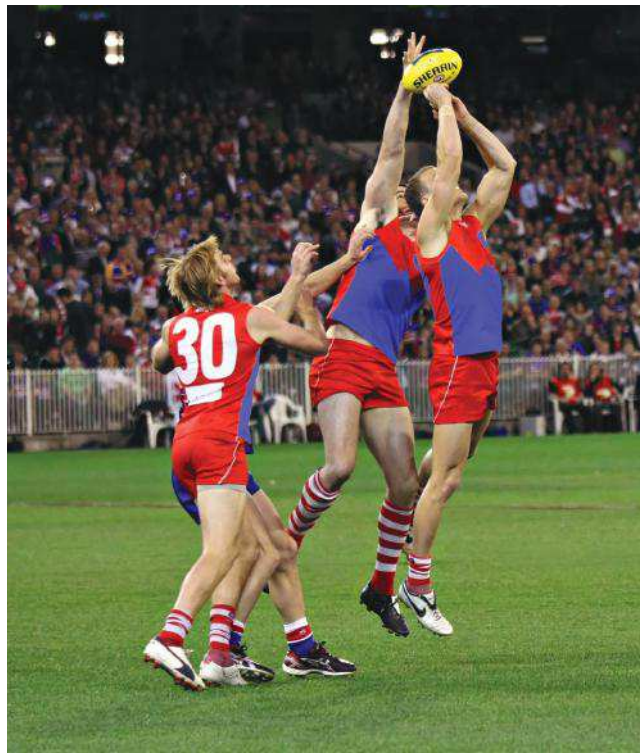
HYBRID 50

LigaTurf HYBRID 50 is based on the **LigaTurf HYBRID 60** system with 10mm less pile; also incorporating a shock pad layer and reduced rubber infill.

LigaTurf HYBRID 50 solution performs to the criteria set by FIFA Quality Program One & Two Star, and AFL / Cricket Australia. **LigaTurf HYBRID 50** fibre, infill and shock pad combination is the same as what was independently Lisport tested (simulated wear) to 150,000 cycles attesting to its true durability.



Areas of Use
Training facilities
Professional and amateur clubs



- FIFA certified
- AFL/CA certified
- 'Entanglement Technology'
- COOLplus® function
- 100% PE formulation
- Bicolour
- Resource conservation
- Multisport
- Force reduction
- Energy return
- Heavy metal free
- No toxic fumes or V.O.C.'s
- Recycled rubber used

Finished Product**Details**

Product Code	
Application	Soccer/ AFL / CA
Pile Height (mm)	50 mm
Colours Available	Field Green/ Lime Green
Total Product Weight g/m ²	2,869 g/m ²

Supply

Available Width	3.66 m
Standard Roll Length	As required
Approx. Shipping Weight	10.5 kg/lm
Line Systems	Tufted as required

Infill Material

Stabilising Infill	Rounded Sand 0.3mm to 1.0mm (25kg/sqm)
Performance Infill	Angular SBR 0.7mm to 2.0mm (5kg/sqm)

Product Warranty

Warranty	Eight year limited warranty as per manufacturer's standard warranty terms
----------	---

Configuration

Machine Gauge	9.52 mm (3/8")
Stitch Rate	10 per 100 mm
Yarn Weight	1,387 g/m ²
No. of Tufts (m ²)	10,504
Perforated	Yes

Yarn Properties

Yarn Construction	PE Ultimate M & PE Ultimate HP
Linear Density	1,200 Tex & 1,200 Tex
Environment	Environmentally friendly yarns which are heavy metal free
UV Stability	The yarn is protected against UV degradation to the highest level as specified in the yarn manufacturer's warranty terms and conditions

Primary Backing

Construction	UV resistant, non fibrillated plain and/or fleeced polypropylene fabrics
Primary Layers	Double

Secondary Coating

Compound Base	Hybrid Emulsion
Tuft Anchorage	30 Newtons (minimum)
Antioxidising Agent	Present

Manufactured in Australia.

As with any manufactured products, specifications may vary within industry tolerances. October 2015